

# CRALAY PRODUCTS CATALOG 2023

2023年 水産商品カタログ

## BT PTO NOBASHI EBI



ORIGINE	VIETNAM
BRAND	MWF
SIZE	6/8,8/12, 5L,4L,3L,2L,L,M
PACKING	BELOW



Brack Tiger Nobashi Tray Pack  
Recommended for Tempura/Breaded Shrimp

## VANNAMEI PTO NOBASHIEBI



ORIGINE	VIETNAM
BRAND	MWF
SIZE	8/12,5L,4L,3L, 2L,L,M
PACKING	BELOW



Vannamei Nobashi Tray Pack  
Recommended for Tempura/Breaded Shrimp

### TAIL ON NOBASHI SHRIMP SIZE AND PACKING STYLE

6/8	PACKING : 8PCS x 4 P x 6 19.5cm-20.5cm ABT50 g /PC	3L	PACKING : 18 x 4 P x 6 15.0cm-16.0cm ABT18.5 g
8/12	PACKING : 10PCS x 4 P x 6 17.5cm-18.5cm ABT32 g	2L	PACKING : 23 x 4 P x 6 14.0cm-15.0cm ABT14.5 g
5L	PACKING : 12PC x 4 P x 6 16.5cm-17.5cm ABT26 g	L	PACKING : 28 x 4 P x 6 13.0cm-14.0cm ABT12.5 g
4L	PACKING : 14PC x 4 P x 6 15.5cm-16.5cm ABT23 g	M	PACKING : 35 x 4 P x 6 12.0cm-13.0cm ABT10.0 g

## TREATED PD BT SHRIMP HLSO COUNT SIZE



ORIGIN	VIETNAM
BRAND	J · OTHER
SIZE	26/30~51/60
PACKING	(900g x 2) x 6

PD Brack Tiger Shrimp (Vacuum Pack)\*Soaking

## TREATED PD VANNAMEI SHRIMP HLSO COUNT SIZE



ORIGIN	VIETNAM · INDONESIA
BRAND	MWF
SIZE	21/25~91/120
PACKING	(900g x 2) x 6



PD Vannamei Shrimp (Vacuum Pack)\*Soaking

## TREATED PD VANNAMEI SHRIMP IQF HLSO COUNT SIZE



ORIGIN	INDONESIA
BRAND	PRIMA BLUE
SIZE	21/25~71/90
PACKING	1.0kg x 10



PD Vannamei Shrimp (IQF)\*Soaking  
Zipper Pack. Easy to save!!

## COOKED PUD VANNAMEI SHRIMP(SALAD SHRIMP)



ORIGIN	THAILAND
BRAND	MWF
SIZE	61/70~91/120
PACKING	1.0kg x 10



Cooked PUD Vannamei Shrimp (IQF)\*Soaking  
It ' s already cooked, so it ' s very easy!!

## LIVE COOKED HOSO VANNAMEI SHRIMP



ORIGIN	THAILAND
BRAND	SURAPON
SIZE	20PCS,25PCS/500g
PACKING	(500g x 2P) x 10



Process it alive. So very fresh. The color is also good!!  
Additive-free!!

## LIVE COOKED HOSO VANNAMEI SHRIMP CENTER PEELED



ORIGIN	THAILAND · VIETNAM
BRAND	SURAPON · MWF
SIZE	25PC30PC35PC/500g
PACKING	(500g x 2P) x 10



Process it alive. So very fresh. The color is also good!!  
Additive-free!! Center Peeled.



### WILD PD SHRIMP IQF



Recommended for salad. \*IQF

ORIGIN	INDONESIA
BRAND	MWF
SIZE	L(100/200),2L(80/120) 3L(60/80),4L(40/60) 5L(20/40)
PACKING	600g x 10



### WILD PUD SHRIMP BLOCK



Recommended for salad. \*Block

ORIGIN	INDONESIA/MYANMER
BRAND	PACKER'S BRAND
SIZE	100/200~300/500
PACKING	1.8kg x 6    2kg x 6

### SMALL PINK HL IQF(WILD SHRIMP)



Shrimp caught in Taiwan and Japan.  
It's sweet and delicious. Requires heating.

ORIGIN	INDONESIA
BRAND	*
SIZE	300-500
PACKING	1kg x 10P



### SHIBA EBI IQF(WILD WR SHRIMP)



Recommended for kakiage and Deep-fry without breading or batter.

ORIGIN	JAPAN
BRAND	*
SIZE	6-10g
PACKING	1kg x 12P



### WILD HLSD SHRIMP IQF



Recommended for kakiage and Deep-fry without breading or batter.

ORIGIN	INDONESIA
BRAND	PACKER'S BRAND
SIZE	300-500
PACKING	1kg x 10P



### COOKED SOUTH SPINY LOBSTER



In Japan, we eat at New Year dishes and celebrations.

ORIGIN	TRISTAN/ST.PAUL
BRAND	PACKER'S BRAND
SIZE	20PC~64PC/CTN
PACKING	10kg

### SOUTH SPINY LOBSTER



In Japan, we eat at New Year dishes and celebrations.

ORIGIN	TRISTAN
BRAND	*
SIZE	20~64P
PACKING	10kg

### SEAFOOD MIX



Recommended for pilaf and gratin.

ORIGIN	MIXED IN JAPAN
BRAND	MWF
SIZE	*
PACKING	NET800g x 10 NET300g x 20 NET170g x 40



### PD SHRIMPAND CUT SQUID MIX



Recommended for pilaf and gratin.

ORIGIN	PACKED IN JAPAN
BRAND	MWF
SIZE	*
PACKING	NET300g x 20 NET170g x 40



### UNAGIKABAYAKI(PREPEARED EEL)



Japanese traditional food.  
There is a culture of eating in the summer.

ORIGIN	CHINA
BRAND	*
SIZE	25PC~70PC/10KG
PACKING	5kg x 2



## MADAGASCAR ORIGIN ORGANIC HOSO BT SHRIMP

生食可



ORIGIN	MADAGASCAR
BRAND	HIDEN
SIZE	20-30 30-40 40-50
PACKING	NET800gx10BOX

【Highest quality Black Tiger Shrimp】  
Sashimi, rare boil, boil, and grilled  
are all delicious.  
It is a shrimp with additional value.

## HLSO VANNAMEI SHRIMP



ORIGIN	PHILIPPIN
BRAND	RICKY
SIZE	13/15~41/50
PACKING	1.8kg x 6



Aquaculture with a salt concentration of 3% or more.  
The taste of shrimp is different from other shrimp.

## HOSO BT SHRIMP



ORIGIN	PHILIPPIN
BRAND	RICKY
SIZE	10PC~80PC/1.3KG
PACKING	1.3kg x 6



Aquaculture with a salt concentration of 3% or more.  
The taste of shrimp is different from other shrimp.

## HLSO VANNAMEI SHRIMP



ORIGIN	INDIA
BRAND	*
SIZE	13/15~51/60
PACKING	1.8kg x 6



It is a Hlso Vannamei shrimp. Delicious!!!

## HOSO BT SHRIMP



ORIGIN	VIETNAM
BRAND	*
SIZE	10PC~80PC/1.3KG
PACKING	1.3kg x 6



It is a Hoso black tiger shrimp. Delicious!!!

## HLSO BT SHRIMP



ORIGIN	INDIA
BRAND	*
SIZE	4/6~51/60
PACKING	1.8kg x 6



It is a Hlso black tiger shrimp. Delicious!!!

## HLSO BT VACUUMED PACK CONSUMER PACK



ORIGIN	INDONESIA
BRAND	SHIKKOKU
SIZE	8/12~31/40
PACKING	(450g x 4) x 6



seawater aquaculture. It is a Hlso black tiger shrimp.  
450g/P contains a fixed number of shirimp.

## HOSO AUSTRALIAN TIGER SHRIMP



ORIGIN	AUSTRALIA
BRAND	*
SIZE	U/6~26/30
PACKING	1.5kg x 6

Natural shrimp caught in the beautiful and clear waters of Australia.

## OTHER KIND SHRIMP

WHITE,PINK

FLOWER,BROWN,COLD WATER

SHRIMP,ARGENTINA RED SHRIMP



## YELLOW FIN FLOUNDER PORTION



ORIGIN	USA
BRAND	CRALAY
SIZE	60・70g
PACKING	10PCSx10px2

真空パック

This flatfish is very popular due to white meat, delicate flavour and fine texture.

## SPANISH MACKEREL PORTION



ORIGIN	CHINA
BRAND	CRALAY
SIZE	60・70・80g
PACKING	10枚入x10px2

真空パック

赤身魚特融のくせが無く  
塩焼き、西京漬け、味噌焼きなどでお召し上がりください。

## SKINLESS GREENLAND HALLIBUT PORTION



ORIGIN	SCANDINAVIAN
BRAND	CRALAY
SIZE	60・70g
PACKING	10PCx10px2

真空パック

The Greenland halibut is highly appreciated for its snowy-white meat with a delicate and soft texture

## SKINON GREENLAND FLOUNDER PORTION



ORIGIN	SCANDINAVIAN
BRAND	CRALAY
SIZE	60・80g
PACKING	10PCSx10px2

真空パック

The Greenland halibut is highly appreciated for its snowy-white meat with a delicate and soft texture

## HOKI PORTION



ORIGIN	NEWZEALAND
BRAND	CRALAY
SIZE	60・70・80g
PACKING	10PCSx10px2

真空パック

Wild caught hoki from New Zealand are a deep water fish.  
How about Fry or Meuniere.

## RED FISH PORTION



ORIGIN	ATLANTIC / PACIFIC OCEAN
BRAND	CRALAY
SIZE	30・50・60・70g
PACKING	20PCx8px2 (30g)
	10PCx10px2 (50・60・70g)

真空パック

Features is a beautifl red skin.  
Red fish put on fat, so used for various dishes.

## POLLACK PORTION



ORIGIN	USA/RUSSIA
BRAND	CRALAY
SIZE	30・50・60g
PACKING	6kgx2 (30g)
	5kgx2 (50g)
	4.8kgx2 (60g)

くせの無い白身のためどんな料理にも適しています。  
フライ、ムニエル、鍋物にいかがでしょうか。

## ATLANTIC MACKEREL PORTION



ORIGIN	SCANDINAVIAN
BRAND	CRALAY
SIZE	30・40・50・60g
PACKING	50PCx4px2(30g)
	30PCx5Px2(40g)
	30PCx4px2(50g)
	20PCx5px2(60g)

Only Scandinavian mackerel caught during the season is used.

真空パック

## SALTED ATLANTIC MACKEREL PORTION



ORIGIN	SCANDINAVIAN
BRAND	CRALAY
SIZE	20・30・40g
PACKING	100PCx3px2 (20g)
	100PCx2px2 (30g)
	50PCx3px2 (40g)

Scandinavian mackerel is cut and salted.

## GREENLAND HALLIBUT STAEK CUT



ORIGIN	SCANDINAVIAN
BRAND	CRALAY
SIZE	100・140g
PACKING	5kgx2 (100g)
	5.6kgx2 (140g)

The Greenland halibut is highly appreciated for its snowy-white meat with a delicate and soft texture

## CUT SQUID KANOKO



ORIGIN	CHINA
BRAND	CRALAY
SIZE	ABT20g
PACKING	50pcsx5px2



1 piece is about 20g. This product is KANOKO cut.  
How about Chinese cooking?

## GUTTED SQUID TUBE



ORIGIN	CHINA
BRAND	CRALAY
SIZE	8pc・10pc/2kg
PACKING	2kgx5/ctn



Skin off Squid tube.

## CUT SQUID FILLET IQF (NET80%)



ORIGIN	CHINA
BRAND	CRALAY
SIZE	ABT1x1x3cm
PACKING	1kgx10



お好みのサイズにカットしてご使用ください。  
中華料理、その他炒め物にご使用いただけます。

## BRANCHED PINEAPPLE CUT SQUID IQF (NET80%)



ORIGIN	CHINA
BRAND	CRALAY
SIZE	ABT40pcs/pack
PACKING	1kgx10p



中華料理、ちゃんぽん等にご使用いただけます。  
カットしていることで味が良くなじみます。

## ROLLING SKINLESS GIANT SQUID FILLET



ORIGIN	PERU
BRAND	KANESE/CRALAY
SIZE	5,6,7,8,10P/5kg
PACKING	5kg x 2



お好みのサイズにカットしてご使用ください。  
中華料理、その他炒め物にご使用いただけます。

## COOKED CUT OCTOPUS



ORIGIN	INDONESIA
BRAND	MWF
SIZE	2/3,3/4,4/5,5/6,6/7
PACKING	1kgX10p



Frozen cut octopus. Used for TAKOYAKI and AJILLO.  
Octopus cyanea material.

## PINEAPPLE CUT SQUID



ORIGIN	INDONESIA
BRAND	MWF
SIZE	31/40,41/60,61/80
PACKING	1kgx10pc



Pineapple cut on the cuttlefish.  
It is often used in Chinese cuisine.

## CUT SQUID FILLET



ORIGIN	CHINA
BRAND	MWF
PACKING	1kgx10pc

It is often used in Chinese cuisine.

## SKIN ON SQUID RING IQF TYPE



ORIGIN	INDONESIA
BRAND	*
SIZE	W:2-2.5cm
PACKING	1kgx10



Skin on squid ring. IQF type.  
Cut into 2cm~2.5cm pieces.

## CUTTLEFISH TENTACLES



ORIGIN	THAILAND/INDONESIA
BRAND	RANONG/SWF
size	2/4・5/7・8/12
	13/20・21/30
	31/40・41/60
	61/80
packing	1kgx12

様々なサイズ取り揃えていますのでお問い合わせください。  
中華料理、その他炒め物にご使用いただけます



## HEAD LESS GREENLAND HALLIBUT



ORIGIN	SCANDINAVIAN
BRAND	CRALAY
SIZE	0.5/1・1/2
PACKING	10kg(NET9kg)

The Greenland halibut is highly appreciated for its snowy-white meat with a delicate and soft texture

## HEADLESS RED FISH



ORIGIN	ATLANTIC /PACIFIC OCEAN
BRAND	CRALAY
SIZE	30・35・40・45 50・55・60・65 70p/5kg
PACKING	5kgx2

It features a beautiful red skin.  
Red fish put on fat, so used for various dishes.

## SILAGO BUTUFLY CUT



ORIGIN	THAILAND
BRAND	CRALAY・ASS
SIZE	15・20・25・30 40・50pcs/550g
PACKING	550gx10



Fresh raw material are prepared fully gutted, cutting Hiraki style. How about TENPURA?

## GREENLAND HALLIBUT FRILL



ORIGIN	SCANDINAVIAN
BRAND	CRALAY
SIZE	M・L・2L
PACKING	1kgx6px2



寿司ネタにいかがでしょうか。解凍後そのままご使用いただけます。  
Mサイズ:幅1.0〜2.5cm Lサイズ:幅2.5〜3.5cm 2Lサイズ:幅3.5cmUP

## HEADLESS YELLOW FIN FLOUNDER



ORIGIN	USA
BRAND	CRALAY
SIZE	30・35・40・50PC/5KG
PACKING	5kgx2

This flatfish is very popular due to white meat, delicate flavour and fine texture.

## CAPELIN WITH ROE FROZEN CONSUMER PACK



ORIGIN	NORWAY
BRAND	MWF
SIZE	ABT15 g /PC
PACKING	170gx32px2



Shishamo from Norway.  
It is a staple item in supermarkets.

## CAPELIN WITH ROE CHILLED CONSUMER PACK



ORIGIN	NORWAY
BRAND	MWF
SIZE	ABT15 g /p
PACKING	170gx32px2



Shishamo from Norway.  
It is a staple item in supermarkets.

## CAPELIN WITH ROE FROZEN CONSUMER PACK 500g



ORIGIN	NORWAY
BRAND	MWF
SIZE	ABT15 g /p
PACKING	500gx20P



Shishamo from Norway.  
It is a staple item in supermarkets.

## CHAM SALMON FILLET



ORIGIN	HOKKAIDO
BRAND	ASK
SIZE	2L,L,M,S
PACKING	10 k g

北海道産秋鮭の3枚卸しフィレーです。  
国産指定の給食関係に！ピンボーンは付いています。

## SALTED ATLANTIC SALMON BELLY PORTION



ORIGIN	PROCESSED IN VIETNAM
BRAND	CRALAY
SIZE	500 g
PACKING	500 g x 20P

ノルウェー又はチリ産のアトランティックサーモンを  
ベトナムで定塩加工しました。

## ATLANTIC MACKEREL FILLET



ORIGIN	SCANDINAVIA
BRAND	CRALAY
SIZE	25~50PCS/5KG
PACKING	5kgx2



Only Scandinavian mackerel caught during the season is used.

## ATLANTIC MACKEREL FILLET BELLY BONE OFF



ORIGIN	SCANDINAVIA
BRAND	CRALAY
SIZE	30・35・40PCS/5KG
PACKING	5kgx2

Only Scandinavian mackerel caught during the season is used.  
Moderate saltiness and put on fat.

## SALTED ATLANTIC MACKEREL FILLET BELLY BONE OFF



ORIGIN	SCANDINAVIA
BRAND	CRALAY
SIZE	ABT150g/p
PACKING	450x30P

真空パック

Only Scandinavian mackerel caught during the season is used.  
With vacuum pack.

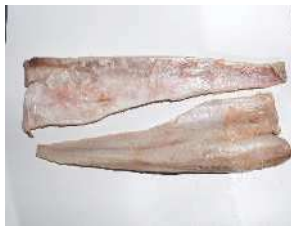
## SKINLESS GREENLAND HALIBUT FILLET



ORIGIN	SCANDINAVIA
BRAND	CRALAY
SIZE	4/6・7/10・11/15
PACKING	5kgx2

Boiled or grilled is recommended.  
This product is skin on or skin off.

## LING FISH FILLET



ORIGIN	NEWZEELAND
BRAND	AMALTAL/SEALOAD
SIZE	500/1000 g
PACKING	10kg/6.8kgx3

Ling have a mild flavour with white meat.  
Mild in taste, so used for various cook.

## SKIN ON HOKI FILLET



ORIGIN	NEWZEELAND
BRAND	AMALTAL/SEALOAD
SIZE	8/12,12/16,16ozUP
PACKING	6.8kgx3

Wild caught hoki from New Zealand are a deep water fish.  
It is mild in taste.

## PANGASIU FILLET RED MEAT ON FAT,BELLY OFF



ORIGIN	VIETNAM
BRAND	MWF
SIZE	220-300g
PACKING	2kgx5P



Process it alive. So very fresh. Additive-free!!  
Recommended for Meuniere.

## POLLACK FILLET



ORIGIN	USA
BRAND	CRALAY
SIZE	20PC・25PC/5KG
PACKING	5kgx2



This product is often used for breaded fish.  
It is mild in taste.

## RED FISH FILLET



ORIGIN	ATLANTIC /PACIFIC OCEAN
BRAND	CRALAY
SIZE	20~70P/5kg
PACKING	5kg x 2

Features is a beautifl red skin.  
Red fish put on fat, so used for various dishes.



## HALF SHELL SCALLOP



ホタテ貝を焼き物用に片方の殻を外して  
内臓を除去したものです。

ORIGIN	HOKKAIDO
BRAND	SEIDOU
SIZE	8cm U, 8-9cm 9-10cm, 10-11cm
PACKING	1kgX10P or 10x15PX2 or 10x10P



## BOILED SCALLOP MEAT



北海道産ホタテをボイルして  
むき身にした商品です。鍋や焼き物に！

ORIGIN	HOKKAIDO
BRAND	KANEKICHI
SIZE	2L~5S
PACKING	800gX5PX2、800 g X10P

## BOILED BABY SCALLOP MEAT



ORIGIN	HOKKAIDO
BRAND	KANEKIN・OTHER
SIZE	81-100, 100-150, 150-200, 200-300
PACKING	1kgX10P



## BOILED BABY SCALLOP MEAT(RAW EAT)



ORIGIN	AOMORI
BRAND	NITTKAISUISAN
SIZE	81-100, 100-150, 150-200, 200-300
PACKING	1kgX10P



## RAW SCALLOP MEAT



ORIGIN	HOKKAIDO
BRAND	PACKER'S
SIZE	2L~5S
PACKING	1kgX10P



## HALF SHELL PARNA SHELL



ORIGIN	NEWZEELAN
BRAND	OLE
SIZE	M
PACKING	1kgX10P

## BAI GAI



ORIGIN	INDIA
BRAND	CAPTAIN
SIZE	20/30, 30/50, 50/80
PACKING	2kgX10P

## RAW OYSTER MEAT IQF



ORIGIN	HIROSHIMA
BRAND	TAKANOBU
SIZE	2L, L, M
PACKING	1kg (NET 850 g) X10P

## BOILED SCALLOP MEAT



ORIGIN	CHINA
BRAND	
SIZE	100/200~400/600
PACKING	800 g X10P

## BOILED FARRER'S SCALLOP MEAT



ORIGIN	CHINA
BRAND	CALAY
SIZE	100/150, 150/200, 200/300
PACKING	800 g X10P

## RAW SHORT NECK CLAM MEAT IQF



PACKING : 1kgx10P

ORIGIN	CHINA
BRAND	CRALAY
SIZE	2L(201/300)
	L(301/500)
	M(501/700)
	S(701/1000)

## BOILED SHORT NECK CLAM MEAT IQF



PACKING : 1kgx10P

ORIGIN	CHINA
BRAND	CRALAY
SIZE	2L(201/300)
	L(301/500)
	M(501/700)
	S(701/1000)

## BRANCHED SHORT NECK CLAM WR



PACKING : 1kgx10P

ORIGIN	CHINA
BRAND	CRALAY
SIZE	2L(61/80)
	L(81/100)
	M(101/120)

## BOILED SHORT NECK CLAM WR IQF



PACKING : 500 g x10P

ORIGIN	CHINA
BRAND	CRALAY
SIZE	2L(31/40)
	L(41/50)
	M(51/60)

## FRESH WATER CLAM



PACKING : 1kgx10

ORIGIN	CHINA
BRAND	*
SIZE	200/300粒
	300/500粒

## COOKED CLAM WR



PACKING : 500g x20P

ORIGIN	CHINA
BRAND	CRALAY
SIZE	8/10,11/15,16/20

## ABALONE WR



PACKING : 1kgx10入

ORIGIN	KOREA
BRAND	*
SIZE	31/40

## BOILED MUSSELS



PACKING : 500 g x 10P x 2

ORIGIN	KOREA
BRAND	*
SIZE	21/25 25/30

## STEEMED ABALONE WR



PACKING : 10x10入

ORIGIN	CHINA
BRAND	*
SIZE	31/40.41/50
	51/60.61/70



## BOILED BT SUSHI



ORIGIN	VIETNAM
BRAND	MWF
SIZE	2L~7L
PACKING	20尾×30P×2合 (2L,3L,4L,5L) 20尾×50P (6L,7L)



We carefully select only fresh black tiger.  
It is characterized by its bright color, firm texture and thickness.

## BOILED VANNAMEI SUSHI



ORIGIN	THAILAND
BRAND	MWF
SIZE	2L~7L
PACKING	20PC×20P×2B'DLS (2L,3L,4L,5L) 20PC×30P (6L,7L)

We carefully select only vannamei raw materials with good freshness.  
It is characterized by the sweetness and umami unique to vannamei shrimp.

## RAW VANNAMEI SUSHI



ORIGIN	VIETNAM
BRAND	MWF
SIZE	2L~4L
PACKING	20PC×20P×2



We carefully select only vannamei raw materials with good freshness.  
It is characterized by the sweetness and umami unique to vannamei shrimp.

## ARGENTINA RED SHRIMP SUSHI



ORIGIN	ARGENTINA
BRAND	MWF
SIZE	2L~5L
PACKING	20PC×20P×2



Carefully selected fresh Argentinean red shrimp.  
It's a skin pack.

## SAKAURA SHRIMP



ORIGIN	TAIWAN
BRAND	*
SIZE	100g
PACKING	50P/CTNS



Natural sakura shrimp from Taiwan.

## BOILED MANTIS SHRIMP SUSHI



ORIGIN	CHINA
BRAND	MWF
SIZE	6g
PACKING	20PC×20P×2



It is a mantis shrimp with good freshness caught naturally.

## SQUID SUSHI



ORIGIN	INDONESIA
BRAND	MWF
SIZE	6g,8g,10g,12g
PACKING	20PX×30P×2



We carefully select only fresh spear squid.  
It is slit. Seasoned with sorbitol.

## CUTTLE FISH SUSHI



ORIGIN	VIETNAM
BRAND	MWF
SIZE	6g,8g,10g,12g
PACKING	20PC×20P×2



We carefully select only fresh Cuttlefish.  
It is slit. Seasoned with sorbitol.

## SQUID TENTACLES SUSHI



ORIGIN	INDONESIA
BRAND	MWF
SIZE	6g,8g,10g,12g
PACKING	20PC×30P×2



We carefully select only the legs of fresh spear squid.

## BOILED OCTOPUS SLICE SUSHI



ORIGIN	CHINA
BRAND	MWF
SIZE	6g,8g,10g
PACKING	20PC×30P×2



No coloring used!  
We use octopus cyanea materials from Indonesia.

## SEABASS FILLET SCALES OFF BELLY BONE OFF



ORIGIN	TAIWAN
BRAND	MWF
SIZE	400g-500g, 500g-600g
PACKING	10kg



Sea bass carefully farmed in Taiwan is frozen with ice.  
After that, it is frozen by quick freezing, so it is very fresh.

## COLD WATER SHRIMP PTO



ORIGIN	SCANDINAVIA
BRAND	MWF
SIZE	M-30 · 20 · 27
PACKING	30尾 x 15P x 2合



By using as little water as possible in processing, the drip after thawing is  
I am holding back. It is characterized by its stickiness and sweetness.

## TROUT SALMON SLICE SUSHI



ORIGIN	NORWAY · TURKY
BRAND	CRALAY
SIZE	7 g, 8 g
PACKING	20PCS x 20P x 3



Beautifully colored trout  
Processed into sushi ingredients in Vietnam.

## TROUT SALMON BELLY SUSHI



ORIGIN	NORWAY · TURKY
BRAND	CRALAY
SIZE	7 g, 8 g
PACKING	20PCS x 20P x 3

It is a product that uses the fatty belly part as a sushi ingredient.

## ROASTED ATLANTIC SALMON BELLY FLAPS SLICE



ORIGIN	NORWAY · CHILE
BRAND	CRALAY
SIZE	7g-10g
PACKING	20PC x 20P x 2

Roast the skin of fatty hasasu  
It is a fragrant finished product.

## BOILED SCALLOP OPEN CUT SUSHI



ORIGIN	CHINA
BRAND	CRALAY
SIZE	9g-11g
PACKING	200g x 40



I opened baby scallops for sushi toppings.

## ROASTED YELLOW EEL SLICE SUSHI



ORIGIN	CHINA
BRAND	*
SIZE	7 g
PACKING	20PC x 40P x 2

## BLOOD CLAM OPEN CUT SUSHI



ORIGIN	CHINA
BRAND	MARUhide
SIZE	16/20, 21/25
PACKING	(250g x 2) x 20



## BOIL YELLOW EEL SLICE SUSHI



ORIGIN	CHINA
BRAND	*
SIZE	6 g
PACKING	20 x 40P x 2

## BOIL YELLOW EEL SLICE SUSHI



ORIGIN	CHINA
BRAND	*
SIZE	6 g, 7 g
PACKING	20 x 40P x 2



## TROUT SALMON TRIM-C



PACKING : 10kg

ORIGIN	PERUorCHILE
BRAND	ASK
SIZE	7~16PC

自然解凍

## ATLANTIC SALMON TRIM-C



PACKING : 10kg

ORIGIN	CHILE
BRAND	PACKER'S
SIZE	6~13PC

自然解凍

## COHO SALMON TRIM-C



PACKING : 10kg

ORIGIN	CHILE
BRAND	PACKER'S
SIZE	7~16PC

自然解凍

## ATLANTIC SALMON BELLY FLAP



PACKING : 1kgX10P

ORIGIN	NORWAY
BRAND	CRALAY
SIZE	3cm+

自然解凍

## ATLANTIC SALMON TRIM-E



PACKING : 11kg

ORIGIN	NORWAY
BRAND	PACKER'S
SIZE	1200-2000 g

自然解凍

PACKING : 20X10P

自然解

## COOKED SALMON MEAT



PACKING : 1kgX10P

RM ORIGIN : RUSSIA

ORIGIN	VIETNAM
BRAND	CRALAY
SIZE	-

自然解凍

## ROASTED ATLANTIC SALMON BELLY FLAPS SLICE



PACKING : 500 g X20P

RM ORIGIN : DENMARKvor NORWAY

ORIGIN	VIETNAM
BRAND	CRALAY
SIZE	500 g

自然解

産地	
ブランド	
サイズ	

自然解凍

産地	
ブランド	
サイズ	

自然解

## SALMON ROE SOY SAUCE TASTE



ORIGIN	HOKKAIDO
BRAND	KITASHOKU
SIZE	500 g
PACKING	500 g X20P

## SEA URCHIN



ORIGIN	CHILE
BRAND	PACKER'S
SIZE	—
PACKING	100 g X30PX2

## CHAM SALMON ROE SOY SAUCE TASTE



ORIGIN	RUSSIA
PROCESSED	HOKKAIDO
BRAND	KITASHOKU
SIZE	500 g
PACKING	500 g X20P

## SCALLOP MEAT



ORIGIN	HOKKAIDO
BRAND	ASK
SIZE	2L~6S
PACKING	1kgX10P

## STEEMED ABALONE



ORIGIN	CHINA
BRAND	CRLAY
SIZE	21-30g,31-40g,41-50g,51-60g
PACKING	14PC x 12P x 2
	10PC x 10P
	10PC x 8P

## COOKED TASTY ABALONE



ORIGIN	JAPAN
BRAND	*
SIZE	31-40 g
PACKING	20PCX10P

## COHO SALMON TRIM-C



PACKING : 10kg

ORIGIN	CHILE
BRAND	-
SIZE	7PC~16PC

## SMOK SALOMO SLICE



PACKING : 100 g x 60P

ORIGIN	CHILE
BRAND	CRLAY
SIZE	100g

## SMOKED ATLANTIC SALMON SLICE



PACKING : 500 g x 20P

ORIGIN	CHILE
BRAND	CRLAY
SIZE	500g

自然解凍

## SMOK SALMON CUT OFF



PACKING : 500 g x 20P

ORIGIN	CHILE
BRAND	—
SIZE	500g

自然解凍



## BREADED VANNAMEI SHRIMP FRY



Fresh vannamei shrimp carefully breaded.  
Clothing rate is 60%.

ORIGIN	VIETNAM
BRAND	MWF
SIZE	16/20~51/60
PACKING	10PC x 10P x 2



## BREADED WILD SHRIMP FRY



I use natural shrimp ingredients. (Pink/White)  
Clothing rate 60%. Mix Panko.

ORIGIN	INDONESIA
BRAND	MWF
SIZE	13/15~51-60
PACKING	[13/15~31/40] 10PC x 10P x 2 [41/50,51/60] 10尾 x 20P x 2合



## BREADED VANNAMEI SHRIMP FRY



Fresh vannamei shrimp carefully breaded.  
Clothing rate is 60%. For chilled sales.

ORIGIN	VIETNAM
BRAND	MWF
SIZE	41/50,51/60
PACKING	8PC x 10P x 4



## BREADED HO VANAMEI FRY



Uses vannamei raw materials. Extra-large fried shrimp weighing about 45 grams each. Clothing rate is 60%.

ORIGIN	VIETNAM
BRAND	MWF
SIZE	ABT45 g
PACKING	10PC x 10P x 2



## VANNAMEI FLITTER



It is a deep fried product. This product can be eaten after defrosting.

ORIGIN	VIETNAM
BRAND	MWF
SIZE	ABT13.5 g
PACKING	1kg x 10



## BT SHRIMP TENPURA



It is a deep fried product. This product can be eaten after defrosting.

ORIGIN	VIETNAM
BRAND	MWF
SIZE	ABT32-35 g
PACKING	5P x 20P x 2



## SMALL BREADED TAIL OFF SHRIMP FRY



Small fried shrimp (no tail) weighing 12.5g each.

ORIGIN	INDONESIA
BRAND	MWF
SIZE	ABT12.5 g
PACKING	500 g x 10P x 2



## SMALL BREADED TAIL ON SHRIMP FRY



Small fried shrimp (with tail) weighing 12.5g each.

ORIGIN	INDONESIA
BRAND	MWF
SIZE	ABT12.5 g
PACKING	500 g x 10P x 2



## POPCORN SHRIMP



The spice works.

ORIGIN	THAILAND
BRAND	MWF
SIZE	ABT9 g
PACKING	500 g x 10P x 2



## CORN STARCHED PD VANNAMEI SHRIMP



flour is already applied, so no preparation is required!

ORIGIN	INDONESIA
BRAND	MWF
SIZE	500 g
PACKING	500 g x 10P x 2



## SOY SAUCE SORKING MACKEREL FRY



This product use Scandinavian mackerel  
How about BENTO or restaurant?

ORIGIN	CHINA
BRAND	CRALAY
SIZE	ABT25g
PACKING	300gx20P×2



## BREADED WHITE FISH YELLOW TYPE



## BREADED CAPELIN FRY



Fried fresh Norwegian shishamo.

ORIGIN	CHINA
BRAND	MWF
SIZE	500 g
PACKING	500 g x 20P



ORIGIN	CHINA
BRAND	CRALAY
SIZE	60g
PACKING	600gx10bagx2



We use color breadcrumbs. This is popular product.  
How about lunch or snack?

## BREADED SARDINE WITH SOUR PLAM AND MACROPHYLL



ORIGIN	CHINA
BRAND	MWF
SIZE	60 g
PACKING	10PC x 10P x 2



By sandwiching plum and perilla.

## BREADED WHITE FISH WHITE TYPE



ORIGIN	CHINA
BRAND	CRALAY
SIZE	30g・60g
PACKING	450gx10bagx2 (30g) 600gx10bagx2 (60g)



We use white breadcrumbs. This is popular product.  
How about lunch or snack?

## HORSE MACKEREL FRY



## SQUID FRY



10.5cm × 4.5cm × 2cm

ORIGIN	CHINA
BRAND	MWF
SIZE	50 g
PACKING	10PC x 10P x 2



ORIGIN	CHINA
BRAND	MWF
SIZE	50 g 60 g 100 g
PACKING	50g:10PC x 10P x 2 60g:50PC x 4 100g:10PC x 4P x 3

Fresh horse mackerel is opened and finished  
with batter.



## SQUID KATSU



Surimi is not used for binding.  
The squid content in the contents is about 90%!

ORIGIN	INDONESIA
BRAND	MWF
SIZE	30g
PACKING	10 x 20P x 2



## BREADED SQUID RING



Squid is carefully breaded.  
About 25 pieces are included in one pack.

ORIGIN	CHINA
BRAND	MWF
SIZE	500g
PACKING	500 g x 20P



## BREADED SQUID RING



Only use fresh squid.

ORIGIN	CHINA
BRAND	MWF
SIZE	180 g 250 g
PACKING	180g:10x20Px3 250g:14x20Px2



## POWDERED SQUID CARTILAGE (KARAAGE)



Delicious cartilage fried chicken.

ORIGIN	CHINA
BRAND	MWF
SIZE	500g
PACKING	500 g x 20P



## POWDERED SQUID TENTACLE(KARAAGE)



Fresh Japanese flying squid legs are coated with fried chicken powder.

ORIGIN	CHINA
BRAND	MWF
SIZE	500g
PACKING	500 g x 20P



## BREADED OYSTER MEAT



Fresh oysters finished with batter!

ORIGIN	CHINA
BRAND	MWF
SIZE	25g/PC
PACKING	20 x 10P x 2



## SHRIMP KATSU



Surimi is not used for binding.  
The shrimp content in the contents is about 90%!

ORIGIN	INDONESIA
BRAND	MWF
SIZE	30g
PACKING	10PC x 20P x 2



## STARCHED ATLANTIC MACKEREL PORTION



Starched scandinavian mackerel.  
Please fried and eat.

ORIGIN	SCANDINAVIA
BRAND	CRALAY
SIZE	20g
PACKING	5kgx2



## TAKOYAKI



Sphere diameter 4.0 cm Japanese-style dashi stock is effective and very delicious.

ORIGIN	CHINA
BRAND	MWF
SIZE	20g/PC
PACKING	1kg x 10



## STARCHED POLLACK PORTION



Starched pollack.  
Please fried and eat.

ORIGIN	NEWZEELAND
BRAND	TAKARA
SIZE	ABT20g
PACKING	1kgx5px2



## VEGETABLE CROQUETTE



ORIGIN	CHINA
BRAND	MWF
SIZE	60g
PACKING	10PC x 10P x 2



コロッケシリーズで1番人気の野菜コロッケ！  
じゃがいも,玉ねぎ,コーン,グリーンピース,ニンジン使用！

## PUMPKIN CROQUETTE



ORIGIN	CHINA
BRAND	MWF
SIZE	60g
PACKING	10PC x 10P x 2



じゃがいもと比べ、カボチャはそのものが持つ自然由来の甘さが  
豊富でカボチャ独特な美味しさが味わえます。

## CURRY CROQUETTE



ORIGIN	CHINA
BRAND	MWF
SIZE	60g
PACKING	10PC x 10P x 2



カレーコロッケの風味に直結する為、カレー粉は国産を使用しております。  
大人も子供にも大人気な商品です。

## BEEF CROQUETTE



ORIGIN	CHINA
BRAND	MWF
SIZE	60g
PACKING	10PC x 10P x 2



牛肉をたくさん使うことで風味を出し、玉ねぎで食感に味覚を与えています。  
少しスパイシーな味付けで、拘っております。

## CORN CROQUETTE



ORIGIN	CHINA
BRAND	MWF
SIZE	60g
PACKING	10PC x 10P x 2



コーンをたくさん使用しており、  
甘みが程よく非常に美味な一品に仕上げました。

## SWEET POTETO CROQUETTE



ORIGIN	CHINA
BRAND	MWF
SIZE	60g
PACKING	10PC x 10P x 2



カボチャコロッケ同様、さつまいも本来の甘みが豊富で、  
風味も豊かです。彩りに黒ゴマを加えております。

## RED SWEET POTETO CROQUETTE



ORIGIN	CHINA
BRAND	MWF
SIZE	60g
PACKING	10PC x 10P x 2



紅芋とジャガイモを使用しており、見た目が色鮮やかなコロッケです。  
紅芋本来の甘さが特徴でホクホク優しい味わいです。

## CRAB CREAM CROQUETTE



ORIGIN	CHINA
BRAND	MWF
SIZE	60g
PACKING	10PC x 10P x 2



外はサクサク中は濃厚クリーミー。カニとクリームの絶妙な  
バランスにこだわっております。

**BONE REMOVAL ROASTED MACKEREL(VACUUM PACK)**



ORIGIN	NORTH EUROPE
BRAND	CRALAY
SIZE	ABT20g
PACKING	200gx20px2

Vacuum pack

Scandinavian mackerel is cut and grilled.  
You can eat it immediately after thawing.

**FRIED PETIT BREADED SHRIMP(MICROWAVE COMPATIBLE)**



PROCESSED	JAPAN
BRAND	MWF
SIZE	500g(ABT11.0g)
PACKING	500 g x 10P x 2



It is a deep flied product. This product can be eaten after defrosting.





商事部 水産部門 水産課

#### 本 社

---

〒800-0281 福岡県北九州市小倉南区中曽根東1-3-11  
TEL : 093-475-1121 FAX : 093-475-1127

#### 東京営業所

---

〒104-0045 東京都中央区築地6-1-8 共栄ビル7F  
TEL : 03-6264-2930 FAX : 03-6264-2950

<https://www.cralay.co.jp/>

